



Engineered Plastic Bearings

For All Your Products and Assembly Needs!

UNLIMITED DIMENSIONS



Hudson, MA • Berlin, CT • Lancaster, PA • South Bend, IN

574-234-9036 • www.plasticmoldingmfg.com

Solid Flanged Bearings

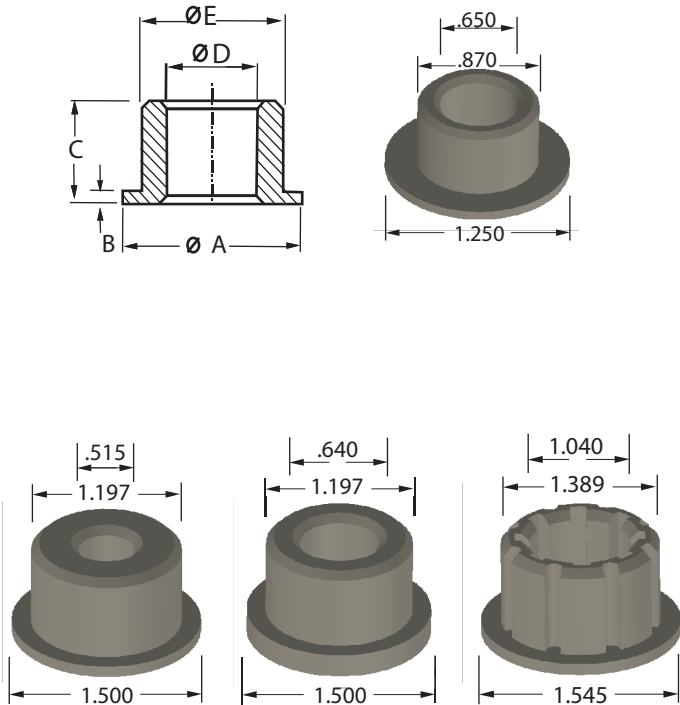
Solid Flanged bearings are used for a higher load capacity compared to cored bearings. Common uses of this part include material carts, casters, and pneumatic tire applications.



Please Note: Measurements are in Inches

*Parts have a groove on the side

PART NO.	A	B	C	D	E	MATERIAL
H-467*	31/32	3/32	23/32	7/11	7/8	Natural Acetal
G-467	1 1/4	3/32	1/2	13/20	7/8	Nylon 6/6
LS-183AL	1 1/4	1/16	9/16	11/16	1 1/8	Natural Acetal
LS-111SP	1 1/2	3/32	25/32	25/32	1 3/16	Natural Acetal
LS-113-2629	1 1/2	3/32	25/32	7/16	1 3/16	Natural Acetal
LS-113	1 1/2	3/32	25/32	1/2	1 3/16	Natural Acetal
LS-112	1 1/2	3/32	25/32	16/25	1 3/16	Natural Acetal
LS-112SP	1 1/2	1/5	22/25	16/25	1 3/16	Natural Acetal
LS-111-2151	1 1/2	3/32	25/32	19/25	1 3/16	Black Acetal
LS-111	1 1/2	3/32	25/32	3/4	1 3/16	Natural Acetal
LS-111-2232	1 1/2	3/32	25/32	3/4	1 3/16	Nylon 4/6 (High Temp.)
2429	1 1/2	3/32	25/32	3/4	1 3/16	Natural Acetal
LS-167*	1 17/32	3/32	25/32	1	1 5/13	Natural Acetal
LS-167BLK*	1 17/32	3/32	25/32	1	1 5/13	Black Acetal
LS-166*	1 17/32	3/32	25/32	7/8	1 5/13	Natural Acetal
LS-167A*	1 9/16	1/8	18/25	1 1/25	1 7/18	Natural Acetal
LS-167BLK*	1 9/16	1/8	18/25	1 1/25	1 7/18	Black Acetal



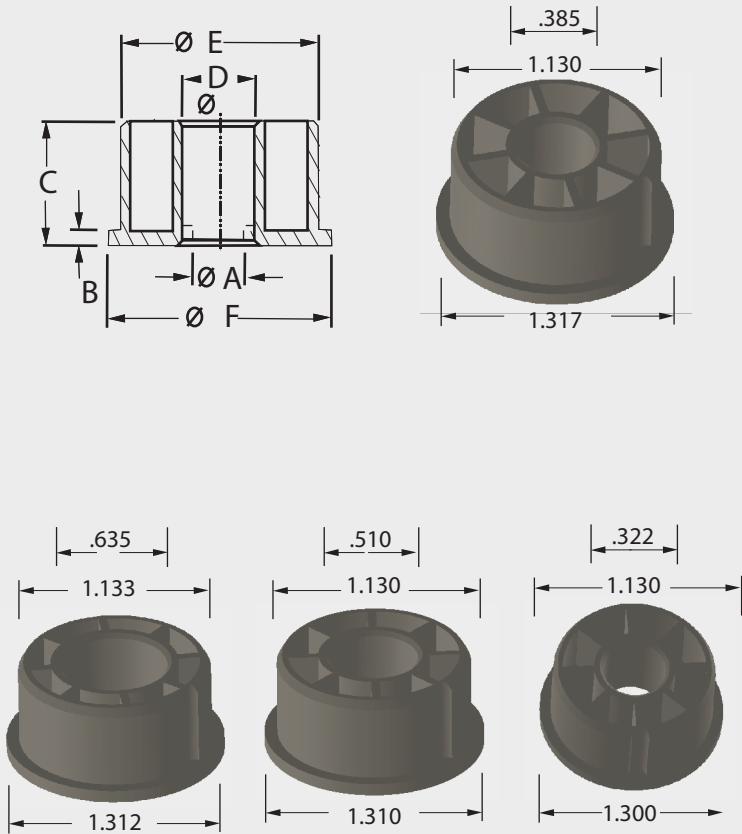
Cored Flanged Bearings

Cored Flanged bearings are cost effective, light-weight bearings that can be used on the end of a wheel or caster, with or without a spanner bushing. Common uses are for light duty carts or pneumatic tire applications.

Please Note: Measurements are in Inches

*Parts have a groove on the side

PART NO.	A	B	C	D	E	MATERIAL
LS-190	1 1/4	1/16	1/2	8/25	1 1/16	Natural Acetal
LS-191	1 1/4	1/16	1/2	5/13	1 1/16	Natural Acetal
LS-192	1 1/4	1/16	1/2	1/2	1 1/16	Natural Acetal
LS-193	1 1/4	1/16	1/2	12/19	1 1/16	Natural Acetal
LS-180	1 9/29	1/16	9/16	5/16	1 1/8	Natural Acetal
LS-180A	1 3/10	3/32	19/32	5/16	1 1/8	Natural Acetal
LS-181B	1 5/16	1/4	3/4	5/13	1 1/8	Black Acetal
LS-181	1 9/29	1/16	9/16	5/13	1 1/8	Natural Acetal
LS-181A	1 9/29	3/32	19/32	3/8	1 1/8	Natural Acetal
LS-182	1 9/29	1/16	9/16	1/2	1 1/8	Natural Acetal
LS-182A	1 9/29	3/32	19/32	1/2	1 1/8	Natural Acetal
LS-183-2470	1 5/16	1/16	9/16	5/8	1 2/15	Natural Acetal
LS-182A-2406	1 3/10	3/32	19/32	13/25	1 1/8	Natural Acetal
LS-183TR	1 3/7	1/16	5/9	5/8	1 1/8	Natural Acetal
LS-626A	1 5/16	1/16	9/16	5/8	1 2/15	Natural Acetal
LS-183	1 3/10	1/16	9/16	5/8	1 1/8	Natural Acetal
LS-183B	1 5/16	1/16	9/16	5/8	1 2/15	Natural Acetal
LS-183-DOYLE	1 5/16	1/16	9/16	7/10	1 2/15	Natural Acetal
LS-113B	1 3/8	3/32	19/29	1/2	1 3/16	Natural Acetal
LS-163*	1 11/20	3/32	17/24	1/2	1 3/8	Natural Acetal
LS-163BLK*	1 11/20	3/32	17/24	1/2	1 5/13	Black Acetal
LS-163A*	1 11/20	3/32	17/24	17/32	1 5/13	Natural Acetal
LS-164*	1 11/20	3/32	17/24	5/8	1 5/13	Natural Acetal
LS-164BLK*	1 11/20	3/32	17/24	5/8	1 5/13	Black Acetal
LS-164A*	1 11/20	3/32	17/24	19/29	1 5/13	Natural Acetal
LS-165*	1 11/20	3/32	17/24	19/25	1 5/13	Natural Acetal
LS-165BLK*	1 11/20	3/32	17/24	19/25	1 5/13	Black Acetal
LS-165A*	1 11/20	3/32	17/24	25/32	1 5/13	Natural Acetal
LS-165N*	1 11/20	3/23	25/32	25/32	1 5/13	Natural Acetal



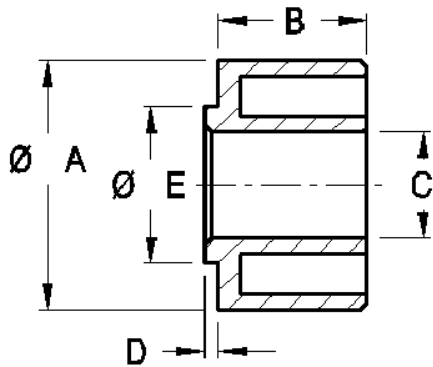
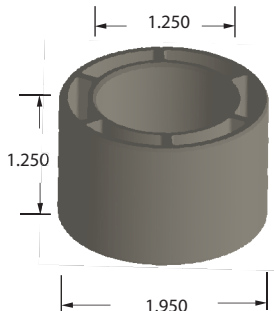
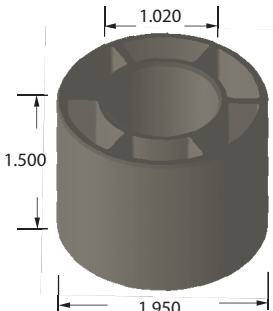
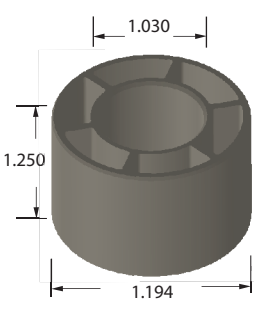
Cored Straight Bearings



Bearings that are made without internal flange work to the wheel with washers or an additional bearing on the outside of the wheel. Commonly used where the width of wheel or caster will not permit a flange.

Please Note: Measurements are in Inches

PART NO.	A	B	C	D	E	MATERIAL
LS-113A	1 3/16	19/29	1/2			Natural Acetal
LS-113D	1 3/16	23/32	1/2	1 3/16	1 3/16	Natural Acetal
2432	1 3/8	1 1/8	16/25			Black Acetal
LS-149	1 19/20	1 1/4	1 1/32			Black Acetal
LS-150	1 19/20	1 1/2	1 1/32			Black Acetal
LS-151	1 19/20	1 1/4	1 1/4			Black Acetal
LS-152	1 19/20	1 1/2	1 1/4			Black Acetal

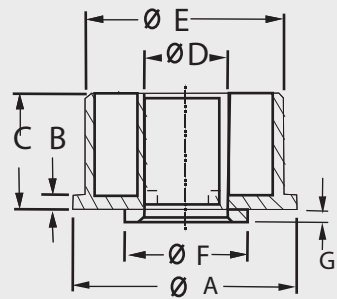
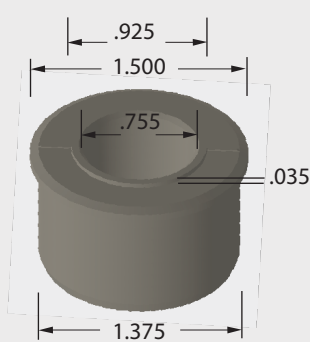
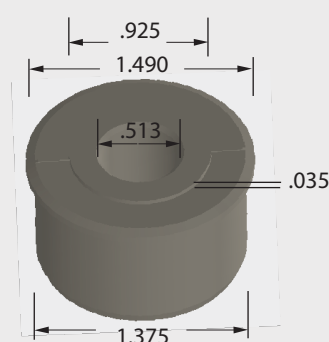
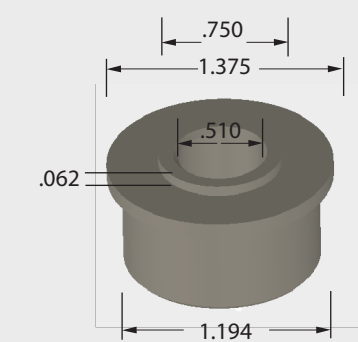


Stepped Flanged Bearings

Bearings with flange and step are used to eliminate the use of external washers typically required to take up space in wheel hub width.

Please Note: Measurements are in Inches

PART NO.	A	B	C	D	E	F	G	MATERIAL
LS-113C	1 3/8	3/32	19/29	1/2	1 3/16	3/4	1/16	Natural Acetal
LS-165C	1 1/2	3/32	30/31	3/4	1 3/8	15/16	1/32	Natural Acetal
LS-163C	1 1/2	3/32	30/31	1/2	1 3/8	15/16	1/32	Natural Acetal
LS-1645	1 1/2	3/32	30/31	21/32	1 3/8	15/16	1/32	Natural Acetal
LS-164C	1 1/2	3/32	30/31	5/8	1 3/8	15/16	1/32	Natural Acetal



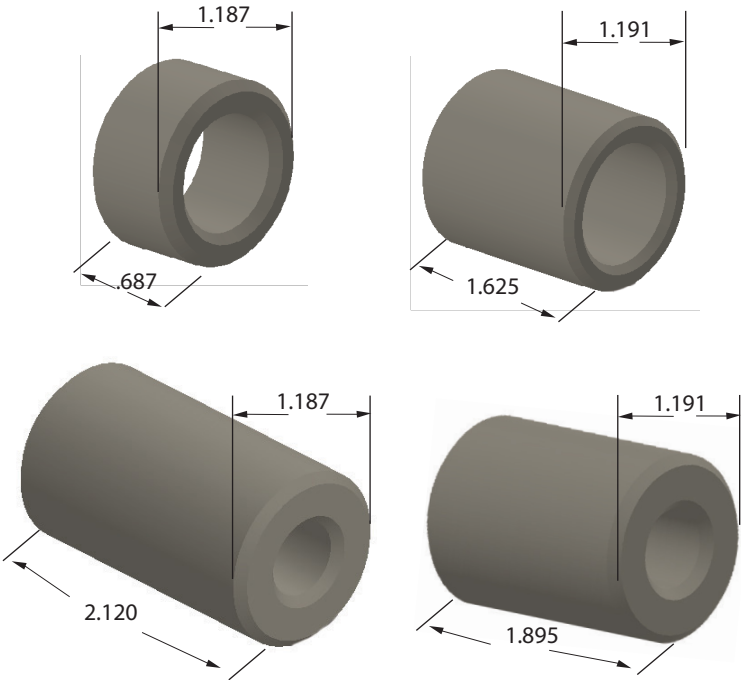
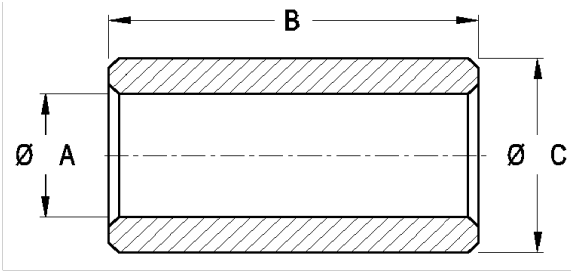
Solid Straight Bearings

Solid bearings up to 2.5 inches long. Common uses of this part are applications where a one-piece bearing is desired.



Please Note: Measurements are in Inches

PART NO.	A	B	C	MATERIAL
LS-1407	5/16	1 1/8	11/25	Natural Acetal
4470-00	5/16	1 4/5	9/16	Natural Acetal
LS-168	1/2	1 23/32	15/16	Natural Acetal
LS-169A	1/2	1 7/32	1 1/16	Natural Acetal
LS-169A-2245	1/2	1 7/32	1 1/16	Black Acetal
LS-169	5/8	1 15/16	1 1/16	Natural Acetal
LS-169BLK	5/8	1 15/16	1 1/16	Black Acetal
AUC-314	1/2	2 3/25	1 3/16	Black Acetal
LS-111A	3/4	11/16	1 3/16	Natural Acetal
LS-121E	1/2	1 5/8	1 3/16	Black Acetal
LS-121A	1/2	2 1/8	1 3/16	Black Acetal
LS-121AW	1/2	2 1/8	1 3/16	Natural Acetal
LS-121F	13/25	1 17/27	1 3/16	Black Acetal
LS-121C	9/16	1 17/27	1 3/16	Black Acetal
LS-122B	5/8	1 17/27	1 3/16	Black Acetal
LS-122B-2632	5/8	1 17/27	1 3/16	Natural Acetal
LS-122BR	5/8	1 17/27	1 3/16	Polypropylene
LS-122G	5/8	1 17/19	1 3/16	Black Acetal
LS-122	5/8	2 1/8	1 3/16	Black Acetal
LS-122-2631	5/8	2 1/8	1 3/16	Natural Acetal
LS-122-1959	21/32	1 7/16	1 3/16	Black Acetal
LS-148	3/4	7/16	1 3/16	Natural Acetal
LS-121B	3/4	1 5/8	1 3/16	Black Acetal
LS-121G	3/4	1 17/19	1 3/16	Black Acetal
LS-121	3/4	2 1/8	1 3/16	Black Acetal
LS-121D	3/4	2 1/4	1 3/16	Black Acetal
LS-147B	1	1 5/8	1 7/16	Black Acetal
LS-147	1	2	1 7/16	Black Acetal
LS-146	1	2 1/2	1 9/16	Black Acetal

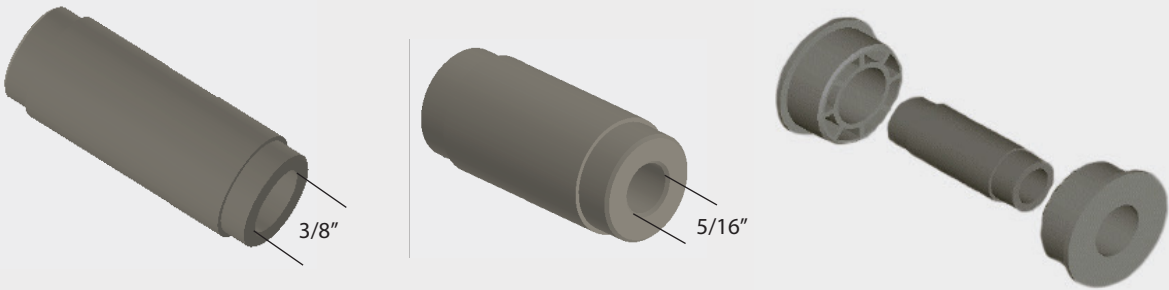
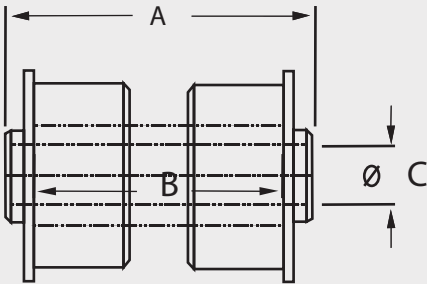


Bearing Units

Bearing units optimize assembly. They are commonly used where fork width is 1.312 - 1.375, with shaft diameter of 0.312 or 0.375

Please Note: Measurements are in Inches

PART NO.	A	B	C
LS-526	1 5/8	1 5/16 to 1 3/8	5/16
LS-626	1 5/8	1 5/16 to 1 3/8	3/8



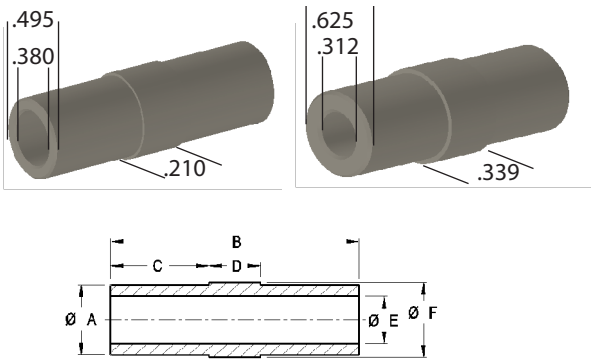
Stepped Spanner Bushings



Stepped Spanner Bushings are used in conjunction with other PMM bearings to provide definitive fork width. Commonly used in bearing units

Please Note: Measurements are in Inches

PART NO.	A	B	C	D	E	F	MATERIAL
LS-61026B	13/23	1 17/27	3/16	1 2/7	3/8	5/8	Mineral filled Nylon 6/6
LS-51026B	13/23	1 17/27	3/16	1 2/7	7/22	5/8	Mineral filled Nylon 6/6
LS-51026AL	11/16	1 5/8	6/25	1 5/32	3/8	5/8	Mineral filled Nylon 6/6
LS-51026	11/16	1 5/8	23/32	7/32	5/16	3/4	Mineral filled Nylon 6/6
LS-183B-5	5/8	1 5/8	9/14	11/32	5/16	11/16	Mineral filled Nylon 6/6
LS-183B-6	5/8	1 5/8	9/14	11/32	3/8	11/16	Mineral filled Nylon 6/6
LS-61026B	11/16	1 5/8	17/24	7/32	3/8	7/32	Mineral filled Nylon 6/6
LS-81239HA	3/4	2 15/32	31/32	1/2	1/2	4/5	Mineral filled Nylon 6/6



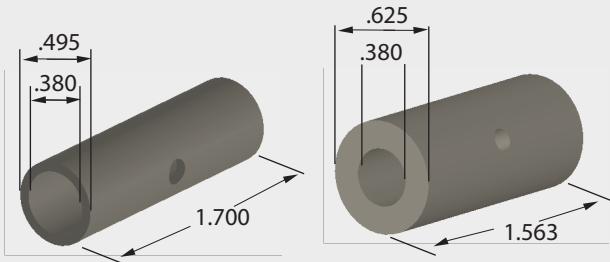
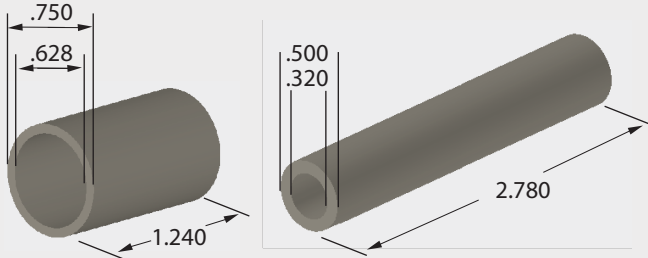
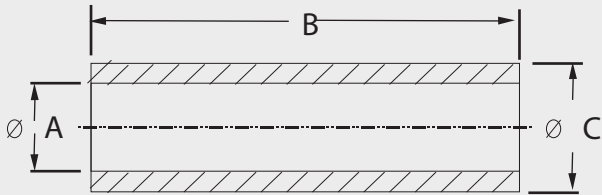
Spanner Bushings

Solid polymer bushings are used in conjunction with bearings to provide two smooth rolling surfaces. Commonly used where steel bearings fail due to exposure to wash down processes.

Please Note: Measurements are in Inches

*Parts have a groove on the side

PART NO.	A	B	C	MATERIAL
LS-58035	5/16	1 1/32	1/2	Mineral filled Nylon 6/6
LS-5826-1493	7/22	1 5/8	1/2	Mineral filled Nylon 6/6
LS-5827-1866	7/22	1 11/16	1/2	Mineral filled Nylon 6/6
LS-5820	5/16	1 1/4	1/2	Mineral filled Nylon 6/6
LS-5820H*	5/16	1 1/4	1/2	Mineral filled Nylon 6/6
LS-5825	5/16	1 9/16	1/2	Natural Nylon 6/6
LS-5825H*	5/16	1 9/16	1/2	Natural Nylon 6/6
59044X44	5/16	2 3/4	1/2	Natural Acetal
2613	8/25	2 25/32	1/2	Mineral filled Nylon 6/6
2674	3/8	1 5/12	1/2	Mineral filled Nylon 6/6
LS-6824H-2071*	3/8	1 1/2	1/2	Mineral filled Nylon 6/6
LS-6824	3/8	1 1/2	1/2	Mineral filled Nylon 6/6
LS-6826	3/8	1 5/8	1/2	Mineral filled Nylon 6/6
LS-6826H*	3/8	1 5/8	1/2	Mineral filled Nylon 6/6
ZF06082701	3/8	1 7/10	1/2	Talc Filled Polypropylene
API-2407	3/8	1 17/24	1/2	Mineral filled Nylon 6/6
LS-6829	3/8	1 13/16	1/2	Mineral filled Nylon 6/6
LS-6829H*	3/8	1 13/16	1/2	Mineral filled Nylon 6/6
LS-61025	3/8	1 9/16	5/8	Mineral filled Nylon 6/6
LS-61025H*	3/8	1 9/16	5/8	Mineral filled Nylon 6/6
LS-61027	3/8	1 11/16	5/8	Mineral filled Nylon 6/6
LS-61027H*	3/8	1 11/16	5/8	Mineral filled Nylon 6/6
LS-61029	3/8	1 13/16	5/8	Mineral filled Nylon 6/6
LS-61029H*	3/8	1 13/16	5/8	Mineral filled Nylon 6/6
LS-61227-2153	3/8	1 11/16	3/4	Mineral filled Nylon 6/6
LS-61227H-2154*	3/8	1 11/16	3/4	Mineral filled Nylon 6/6
LS-81224	1/2	1 1/2	3/4	Mineral filled Nylon 6/6
LS-81224H*	1/2	1 1/2	3/4	Mineral filled Nylon 6/6
LS-81230	1/2	1 7/8	3/4	Mineral filled Nylon 6/6
LS-81230H*	1/2	1 7/8	3/4	Mineral filled Nylon 6/6
LS-81237	1/2	2 5/16	3/4	Mineral filled Nylon 6/6
LS-81237H*	1/2	2 5/16	3/4	Mineral filled Nylon 6/6
2599	1/2	2 5/16	3/4	Nylon 4/6 Black (High Temp.)
LS-81239	1/2	2 11/25	3/4	Mineral filled Nylon 6/6
LS-91239H*	1/2	2 11/25	3/4	Mineral filled Nylon 6/6
39286	5/8	1 6/25	3/4	Natural Nylon 6/6



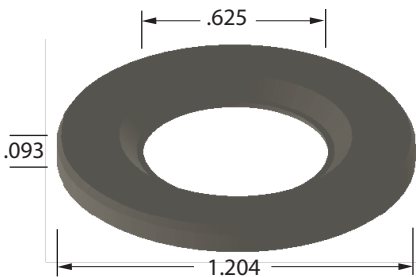
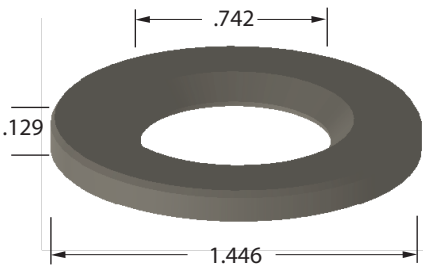
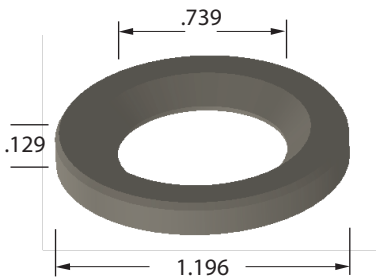
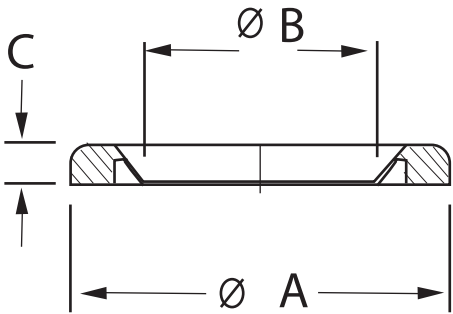
Grease Seals



Dirt or grease seals are commonly used in exposed environments where a seal is necessary to protect the application from unwanted particles from entering.

Please Note: Measurements are in Inches

PART NO.	A	B	C	MATERIAL
LS-155	1 2/27	5/8	4/31	Santoprene Nat.
LS-154	1 3/16	5/8	1/8	Santoprene Nat.
LS-153	1 3/16	17/23	1/8	Santoprene Nat.
LS-154A	1 7/32	5/8	3/32	Santoprene Nat.
LS-153A	1 7/32	3/4	3/32	Santoprene Nat.
LS-156	1 7/16	23/31	4/31	Santoprene Nat.

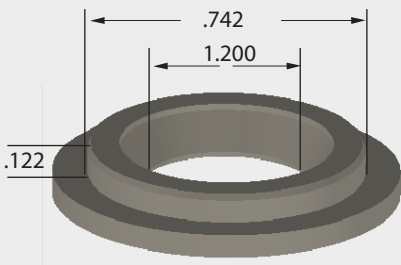
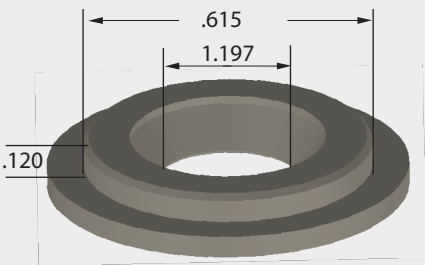
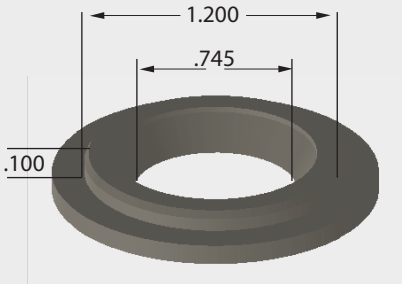
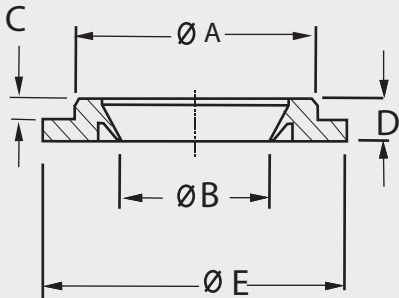


Flanged Seals

Flanged Seals are also commonly used in exposed environments of dirt and grease, where additional space is required to be sealed to protect the application from unwanted particles from entering.

Please Note: Measurements are in Inches

PART NO.	A	B	C	D	E	MATERIAL
LS-128	1 3/16	5/8	1/10	3/16	1 1/2	Santoprene Nat.
LS-128A	1 3/16	8/13	3/25	7/32	1 1/2	Santoprene Nat.
LS-1271C	1 3/16	21/29	1/10	3/16	1 1/2	Nylon 6/6 Nat.
LS-127	1 3/16	3/4	3/32	3/16	1 1/2	Santoprene Nat.
2591	1 3/16	3/4	3/32	3/16	1 1/2	TPE 100 Black
2573	1 3/16	3/4	3/32	3/16	1 1/2	TPE 100 Nat.
LS-127 BLK	1 3/16	3/4	3/32	3/16	1 1/2	Santoprene Black
LS-127AL-BS	1 1/5	3/4	1/8	7/32	1 1/2	Santoprene Black
LS-127A	1 1/5	3/4	1/8	7/32	1 1/2	Santoprene Nat.
2595	1 1/5	3/4	1/8	7/32	1 1/2	TPE 100 Nat.
2596	1 1/5	3/4	1/8	7/32	1 1/2	TPE 100 Black

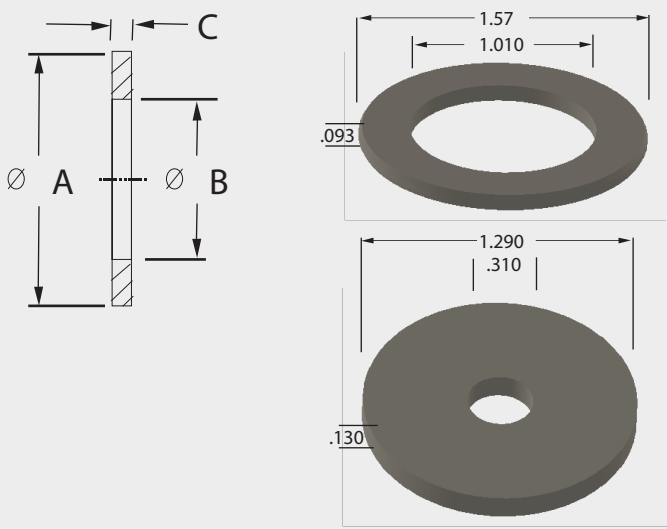


Washers Of All Sizes

Polymer washers can be used in any situation where a washer is required.



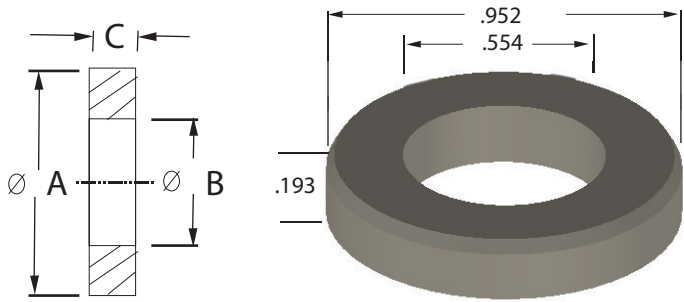
PART NO.	A	B	C	MATERIAL
1572	3/5	9/32	1/16	Black Acetal
2543	7/8	5/16	1/8	Black Acetal
LS-157	15/16	1/2	3/32	Nylon 6/6 Nat.
1573	1	1/2	1/16	Black Acetal
LS-158	1 2/29	20/31	3/32	Nylon 6/6 Nat.
1574	1 1/8	11/20	1/16	Black Acetal
LS-108	1 3/16	13/20	1/11	Nylon 6/6 Nat.
LS-108B	1 3/16	13/20	1/11	Black Acetal
LS-107	1 3/16	25/32	1/11	Nylon 6/6 Nat.
LS-107B	1 3/16	25/32	1/11	Black Acetal
LS-107A	7/32	4/5	3/32	Nylon 6/6 Nat.
LS-104	1 1/4	1/2	1/16	Nylon 6/6 Nat.
2413	1 9/32	5/16	3/23	Black Acetal
LS-160A	1 4/7	19/25	3/32	Nylon 6/6 Nat.
LS-160				Natural Acetal



Retainer Washers

Retainer washers are thick and used to take up space where two washers may need to be used.

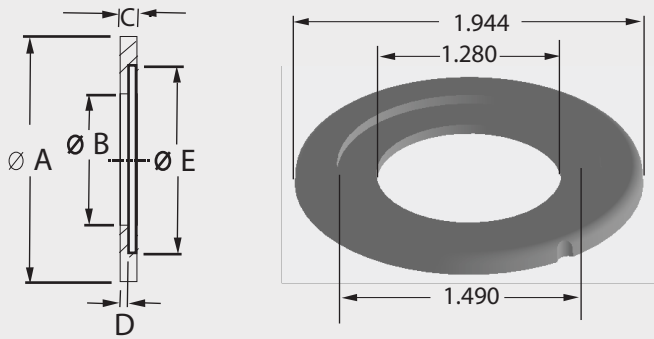
PART NO.	A	B	C	MATERIAL
B-6	20/21	9/16	3/16	Nylon 6/6 Nat.
B-33	3/16	2/3	7/32	Nylon 6/6 Nat.
B-44	3/16	25/32	7/32	Nylon 6/6 Nat.



Stepped Washers

Stepped washers hold a recess. They are commonly used where increased diameter may be needed without increases in thickness.

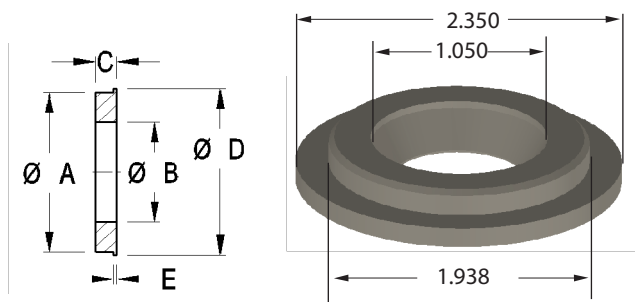
PART NO.	A	B	C	D	E	MATERIAL
LS-130A	1 17/18	1 1/32	1/8	1/16	1 1/2	Nylon 6/6 Nat.
LS-130B	1 17/18	1 5/32	1/8	1/16	1 1/2	Nylon 6/6 Nat.
LS-130C	1 17/18	1 7/25	1/8	1/16	1 1/2	Nylon 6/6 Nat.



Flanged Washers

Flanged washers are commonly used where an increased diameter may be needed without increases in thickness.

PART NO.	A	B	C	D	E	MATERIAL
SH-1	1	5/8	1/8	1 1/25	1/32	Natural Acetal
SH-2	1	3/4	1/8	1 1/25	1/32	Natural Acetal
SH-4	1	25/32	1/8	1 1/25	1/32	Natural Acetal
SH-3	1	7/8	1/8	1 1/25	1/32	Natural Acetal
2571	1 15/16	1 1/20	3/16	2 7/20	3/16	Mineral filled Nylon Black



Advantages of Plastic Bearings:



- Corrosion Resistance
- Self Lubrication
- Low Cost
- Low Operating Noise Levels
- Light Weight



Custom Bearings for all your Products and Assemblies

Our in-house custom design, tool manufacturing, molding facility, and team of experienced engineers will assist all of your custom assembly needs.

We are ready to discuss your specific requirements.

Contact us at sales@plasticmoldingmfg.com or **574-234-9036** Our staff has experience molding hundreds of grade resins.

Resin Information

Acetal: *Operating Temperature Range: -20° - 180° F.*

Our engineered acetal plastic bearings have metal-like properties and offer an excellent balance of desirable mechanical properties that bridge the gap between metals and ordinary plastics. The chemical composition and highly crystalline structure of acetal homopolymers offer a unique combination of physical properties not available with metals or most other plastics. Because of these properties, this material creates a wear surface that is excellent for bearings, bushings, and cams.

Nylon 6/6: *Operating Temperature Range: -20° - 250° F.*

This material possesses an outstanding balance of properties, combining strength, moderate stiffness, high service temperature, and a high level of toughness. Because of its low coefficient of friction, resistance to repeated impact, and resistance to abrasion, Nylon 6/6 makes an excellent material for bushings, bearings, and thrust washers.

Nylon 4/6: *Operating Temperature: 340° / 10,000 hrs.*

Nylon 4/6 resin is used when a higher operating temperature is required to withstand prolonged periods of time. Nylon 4/6 exhibits a melting temperature of 560° F as well as higher crystalline structure compared to PA66. This feature gives a technical edge over other engineering plastics with regards to heat resistance, mechanical properties at elevated temperatures, wear, and friction behavior.

Mineral Reinforced Nylon: *Operating Temperature Range: -20° - 280° F.*

We use a toughened mineral reinforced nylon 6/6, which gives it superior impact strength as measured by both the Izod and Gardner (falling dart) impact tests. Adding our proprietary internal lubrication to this toughened resin provides the characteristics necessary for an extended wear bushing or spanner.

Bearingsnewlogobrochure8-18-25

